

September 2023



WELLESLEY TIMES



Project Updates | Community News | Wellesley Residents Trust | Kids Activities
and so much more...

Project update

Welcome to our Autumn edition

The Wellesley team would like to welcome all of the new residents who have been steadily moving in to their homes over the past few months. We hope you are settling in well.

We currently have 1250 homes occupied at Wellesley, just over 30% of the total number of homes that will be built.

We would like to thank everyone for their patience and cooperation over the summer while Queens Avenue was closed.

Unfortunately, we have been advised that the larger scheme of works at the Alisons Road and Queens Avenue crossroads have been delayed due to unforeseeable complications and are unlikely to be completed until end of summer 2024. Whilst we do understand how frustrating this is, we want to reassure you that our contractors are working hard to ensure the junction and roads are completed to an acceptable standard to avoid further complications in the future.

Hampshire County Council will soon start building the second primary school here at Wellesley, which will be situated by the Stanhope Lines East and Buller phases.

We were delighted to announce that the Wellesley Woodlands have been awarded a Green Flag for the second year running. This prestigious award is the international quality mark for parks and green spaces and is a testament to the hard work of all our staff and volunteers.



Wellesley Heritage

Work continues on the initial designs of the Neighbourhood Centre, which includes the Aldershot Command Headquarters Building. It is a grade 2 listed building, steeped in history. Completed in 1895 for a cost of £19,097, it became the largest of the home commands for the British Army in 1907. At 6.30pm on 3 August 1914, a soldier hoisted the mobilisation signal on the lawn outside the HQ building. The garrison began preparing for war, ahead of the official declaration which came the next day. It was regarded as a top priority that the soldiers based at Aldershot should be mobilised and away as soon as possible.

The end of the war was officially announced from the Aldershot Headquarters building. On the morning of 11 November 1918, rumours swept through Aldershot that a ceasefire had been signed and troops congregated in large numbers at the Army Headquarters. At 11.00, the Town Clerk was notified by Army HQ that a ceasefire had just come into effect and the camp sirens were sounded. General Murray appeared on the balcony of the headquarters building to make the official announcement, but few heard his speech for the cheering.

On the outbreak of the second world war, Aldershot Command once again formed the First Corps of the British Expeditionary Force.

In April 2014, Support Command HQ moved to North Camp, following the re-building of the Aldershot garrison, leaving behind this magnificent building to start a new chapter as part of the Wellesley estate.

Wellesley Residents Trust

REMINDER - Paperless Billing

Residential Management Group - RMG who look after the bookkeeping for the Wellesley Residents Trust, have moved over to paperless billing. That means for any private owners at Wellesley your invoices, reminders and all other written correspondence will be sent directly to the email address that you registered your RMG account with.

We would urge everyone to check and update their email address, which you can do by signing into your account via the portal www.wellesleyliving.co.uk or calling the RMG call centre on 03450024422.

If you are a private owner who has not yet signed up to the portal, you can do so by visiting www.wellesleyliving.co.uk/register to get access to statements and make payments.

You can revert to receiving paper correspondence any time by deselecting the paperless option within the profile section of your RMG Living Account.



Handover of Areas

When you purchase a house at Wellesley you become a member of the Wellesley Residents Trust (WRT) "A management company which will uphold and promote Wellesley's vision for the area as well as ensure green spaces and estate areas are maintained to a high standard."

WRT has not yet accepted handover of any areas that they are to manage on the estate. We continue to work with the house builders to ensure areas are brought up to an acceptable standard prior to being handed over and hope to be able to finally take the first phase on later this year.

It is important to note that when land is sold to a housebuilder at Wellesley, they become responsible for the land (including signage, roads and landscaping etc). If you notice areas that are not up to standard then please contact the house builders directly.

If you are unsure who best to contact please email us at info@wellesleyhampshire.co.uk

Useful Contacts

Bellway Homes Thames Valley Region
0118 933 8020

Bellway Homes South London Region
01737 644911

Ashberry Homes - 0118 933 8020

Barratt Homes - 01483 508456

David Wilson Homes - 01483 508456

CALA Homes - 01784 225300

Weston Homes - 01279 873333

Taylor Wimpey - 01494 509090

Wellesley Residents

A note from Simon Wood - Chair of the Wellesley Residents' Committee

The Residents' Committee is made up of residents from the estate. We meet monthly to discuss issues arising and work with various other parties to support residents' interests.

Our Annual General Meeting (AGM) will be held on September 21st 2023 at Smith Dorrien House from 19:00. This is a great opportunity to meet the committee and other people who live on the estate. We are currently looking for a treasurer and we will always welcome new committee members'. If you are interested, please contact wellesleyresidentscommittee@gmail.com for more information.

Key focuses for the past quarter:

- 1) Education - we continue to engage with the consultation on expanding Alderwood Secondary School
- 2) Crime - we have engaged with the local police. Their advice remains to report all issues - receiving more reports will allow them to prioritise our issues more highly.
- 3) Cycling - we have discussed with the Rushmoor Cycle Forum on holding the developers to account and ensuring that there are suitable cycle lanes from the estate to the town centre.



Wellesley Residents Committee AGM

Thursday 21st September 7pm
Smith Dorrien House, Queens Avenue

Come and meet the committee, hear what we have been up to and chat to your neighbours over a FREE glass of wine.

So that we know how many people will be coming please register for free here:
<https://tinyurl.com/wellesleyresidentsagm>



Crime and Antisocial Behaviour

We have now held 2 meetings at Smith Dorrien House to come and meet with the Police Community Support Officers to raise issues and concerns and hear what actions they have been taking to tackle the issues being reported by Wellesley Residents.

The message from these evenings is to report everything to the police, even if it's after the event, you can do so via their website simply visit <https://www.hampshire.police.uk/> It's so simple to do and it can really help make a difference.

You can also report antisocial behaviour to Rushmoor Borough Council <https://bit.ly/RushmoorReport>



Aldershot Town Centre

Countdown to completion of major town centre scheme



There's now less than a year to go until the Union Yard development in Aldershot town centre is completed and open for business. The key regeneration scheme will offer 12 flexible commercial and retail units off Union Street and Wellington Street to encourage the widest range of new uses and services to help create a vibrant town centre.

A makers' yard, featuring eight shipping container-style units will also offer smaller creative workshop spaces for small and independent businesses.

These will sit alongside a new public square that will provide a pedestrian link between the High Street and Union Street. Rushmoor Borough Council has already appointed commercial agents to be the point of contact for businesses looking to take on one of the units and in the autumn, they will be bringing together marketing material and launch a new website to promote the scheme.

Above the commercial units will be 128 student units and 100 one and two-bedroom apartments. Eighty-two of the apartments will be marketed by a local estate agent for private rent from Rushmoor Homes and 18 will be affordable units managed by Vivid Housing Association and initially made available to people over the age of 55. Across the whole development, there will be ten wheelchair-accessible apartments and eight wheelchair

accessible studios in the student accommodation.

Councillor Martin Tennant, the Deputy Leader and Cabinet member for major projects and property at Rushmoor Borough Council, said: "It is wonderful that from next summer, we will be welcoming new businesses and residents to Union Yard. The development is really transforming the town centre and we are immensely proud of what has been achieved so far."

For more information about Union Yard, go to www.rushmoor.gov.uk/unionyard.



Aldershot Craft Fayre

The weather was just right for the newly relaunched Aldershot Craft Fayre on Saturday 19th August. 19 crafters selling a range of handmade products from knitted goods, recycled beaded jewellery, sterling silver jewellery, dog harnesses, jams and chutneys, shoe accessories, dioramas and more turned out at Union Street. Live music was provided by local artists Bryony Heart and Joe Wright. It was a fantastic day for everyone involved. The next craft fayre will be held on the 28th October in The Wellington Centre and we are always on the look out for local crafters. For more information, email: markets@rushmoor.gov.uk or search for Aldershot Farnborough Markets on Facebook or Instagram.

Community News

FREE Energy Advice

Citizens Advice Rushmoor has launched a new project to help tackle fuel poverty within some of our most in need communities across Rushmoor.

The project involves the creation of a new helpline providing local families and individuals with free advice to help you save money and energy. You will be supported to access schemes such as the Warm Home Discount and the Priority Services Register, as well as benefit eligibility checks, debt advice, and other crisis support such as food, clothing, and housing.

This new helpline is operating on Wednesdays and Thursday between 10am-1:30pm until the end of December 2023. If you are unable to access the telephone clinic during these hours, you can leave a voicemail or send an email to arrange a callback from one of Citizens Advice Rushmoor's energy advisers.

In addition to the helpline, an experienced team will also be helping equip local volunteers with the tools and confidence they need to help support members of their own community. This will improve the accessibility of the service to ensure the most vulnerable can access it too, including those digitally excluded.

If you live in Rushmoor and would like to access the service, or find out more about volunteering, you can call the helpline on Wednesdays and Thursdays between 10am and 1:30pm, leave a voicemail, or drop us an email:
0808 175 3559
energy@carushmoor.org.uk



Welcome to
Aldershot

7pm - 8pm 10th October 2023
Karuna Coffee House, Wellington Street

New to the area?
Not sure what there is to do here?
Come and chat to locals who live and work in Aldershot and love it here!

Book here:
bit.ly/Welcometoaldershot

Wellesley Woodlands Walks

Enjoy the nature on your doorstep with these FREE events in the woodland.

Beginners Fungi Walk
Sunday 22nd October 1.30-3pm
Enjoy a leisurely walk in the woods and learn to identify some common fungi.

Winter Tree ID Walk
Saturday 2nd December 11-12.30pm
Join us to learn tips and tricks for identifying woodland trees in winter.

For more details and to book scan the QR code or visit: www.wellesleywoodlands.co.uk



Community News

FARNBOROUGH & ALDERSHOT

MENOPAUSE SUPPORT

Monthly Cafe Meet Ups in Cafes across Rushmoor

No need to book, for more info email jules.crossley@rushmoor.gov.uk

Regular Workshops

Monthly Walks across Rushmoor

Facebook page: [Farnborough & Aldershot Menopause Support](#)



The Band of the Army Medical Services
in concert
Conducted by Captain Peter Bede

An Autumn Reflection

St Andrew's Garrison Church
Queens Avenue
Aldershot
GU11 2BY

Tuesday 19th September
Doors open at 1900
Concert starts at 1930
FREE ADMISSION

For Further Information contact:
2medx-crhq-amsband@mod.gov.uk or find us on Facebook & Instagram: @ArmyMedicalServicesBand

A Word From 'Resident Rev' Dean Pusey

It's been two years at the time of writing that I have lived here in Wellesley, moving in August '21. As well as being a resident, I am by default a neighbour! It has been good to get to know some of you, not least those in closer proximity and learn a little about lives and share in its joys and challenges.

In its heyday there was an Australian Soap that featured Kylie Minogue and Jason Donovan. It was all based around a fictional suburban close in Melbourne. It captured the imagination of millions back in 80s prime time UK TV. It was called 'Neighbours'

I have been thinking about what makes a good neighbour, what do you think? Jesus Christ spoke about asking 'Who is my neighbour? In one of his most famous stories that you might be familiar with called the Good Samaritan. A neighbour it seems is more than someone we live beside, known or unknown. We may choose to get along or not. Neighbours sometimes can tell us more about ourselves and how we do or don't do community. The same Jesus asks - 'Do we love our neighbours as ourselves?'. What does this look like in person or on social media?

For this community to develop and flourish well, I wonder whether those two statements and questions may ring true in what we hope to see and do.

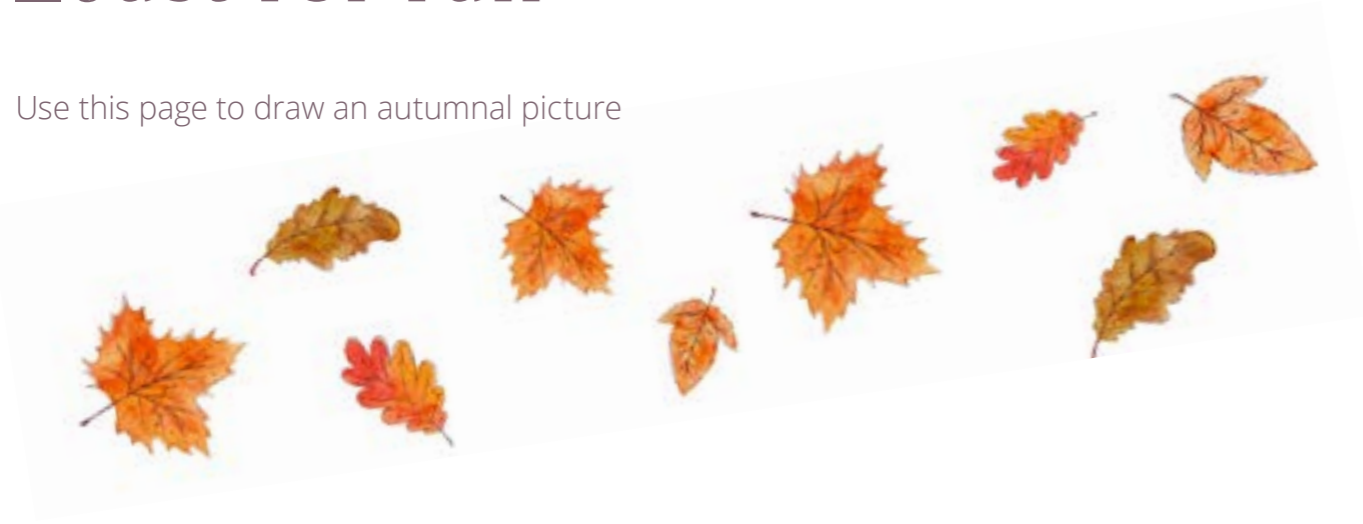
Maybe as a result we might develop unexpected friendships that are a bonus and seek the well-being of ourselves and immediate household and the community in Wellesley in what we say and do.

'That's when good neighbours become good friends?'

As the title song said...

Just for fun

Use this page to draw an autumnal picture



Just for fun

Create your own leaf prints

1. Collect up some leaves of different shapes and sizes
2. Paint the leaves
3. press the leaves paint side down on a piece of paper and cover with another piece of paper
4. Press down or use a rolling pin and voila, some beautiful leaf prints!

Try with different colours and types of paints, or marker pens sprayed with water.



Can you fill in the missing numbers?

5			8	6			1	
		2	7		1	6		
	7	1				2	5	
9	1			2			7	
3			1	4	5		6	
	6			9			2	4
	5	3				4	6	
		8	9		3	5		
2			5	1			7	

Spot the difference



Can you spot 5 differences?



S	F	A	C	O	R	U	N	K	W	P	J	L	U	L
G	H	I	U	R	P	S	T	E	B	L	E	P	Q	X
Z	W	O	A	T	U	N	L	W	G	A	Y	H	A	N
C	I	I	F	B	M	N	O	G	F	B	V	N	U	M
P	N	D	K	J	P	I	Y	E	C	S	P	R	T	E
H	D	E	R	I	K	O	P	H	O	P	G	P	U	I
R	Y	L	P	K	I	R	F	C	Y	V	S	X	M	L
W	O	Y	V	W	N	P	E	C	R	B	C	Z	N	K
P	G	O	L	D	U	D	Y	H	T	K	A	N	U	J
R	E	M	N	O	L	K	P	I	Y	D	R	W	E	G
E	Y	I	K	O	P	U	B	L	I	S	E	R	G	U
I	P	O	C	G	H	G	V	L	U	O	C	L	K	S
H	A	R	V	E	S	T	P	Y	D	H	R	I	T	T
W	D	T	I	A	Y	L	Q	U	E	R	O	U	W	Y
T	K	U	P	L	E	A	V	E	S	O	W	E	G	P

Can you find the following words?
 CRUNCHY WINDY
 PUMPKIN RAIN
 LEAF COLD
 AUTUMN CHILLY
 GUSTY HARVEST
 SCARECROW GOLD
 LEAVES

What's on?



The Princes Hall is just a 5 minute walk down Hospital Hill. There is a huge variety of entertainment to suit all tastes. Here are our top picks:

Tea Dance

6th September & 4th October

Come along to the Princes Hall for a wonderful informal afternoon of Ballroom, Latin and Sequence dance, plus a break for tea and coffee, hosted by Alan Amor - Dance Teacher

www.princeshall.com/event/107001/tea-dance

Aldershot: Murders and Music Halls

28th September

A revealing look at our amazing historic town, hear and see how the army and civilians lived over 100 years ago.

www.princeshall.com/event/156601/aldershot-murders-and-music-halls

Ministry of Science

23rd October 2023

Expect 20ft LIQUID NITROGEN clouds, exploding OXYGEN & HYDROGEN balloons, FIRE TORNADOS, HYDROGEN bottle rockets, ignited METHANE and even a self-built Hovercraft!

www.princeshall.com/event/145001/ministry-of-science

Aladdin - Pantomime

Throughout December

Arguably the best pantomime out there, you are guaranteed a show of ridiculous silliness and a lot of fun!

www.princeshall.com/event/145401/aladdin

Tickets are available from the Box Office on 01252 329155 or via www.princeshall.com



The West End Centre, just 10 minute walk away, is a space for arts and the community to thrive. Here are some of our top picks:

Classes and Workshops

From 11th September

Fancy trying something new? The West End Centre could be the answer, with activities available for all ages on a whole range of different subjects including: painting, pottery, theatre, ukulele, silver jewellery, stained glass, sewing, and more!

www.westendcentre.co.uk

Kick Arts UK presents LILAC + support

16th September 2023

LILAC bring their Floral Indie Disco, with a rock n roll spirit to the Westy this Autumn. Get your tickets quick though, this one is tipped to sell out!

www.westendcentre.co.uk/event/kick-arts-uk-presents-lilac-support

Millie Manders and The Shutup

18th November 2023

Cross-genre punk rock. Fronted by Millie Manders, whose staggering vocal dexterity, backed by grinding guitars and irresistible horns has huge pop appeal.

www.westendcentre.co.uk/event/millie-manders-and-shutup

Tickets are available from the Box

Office on 01252 330040 or via

www.westendcentre.co.uk



Over to you

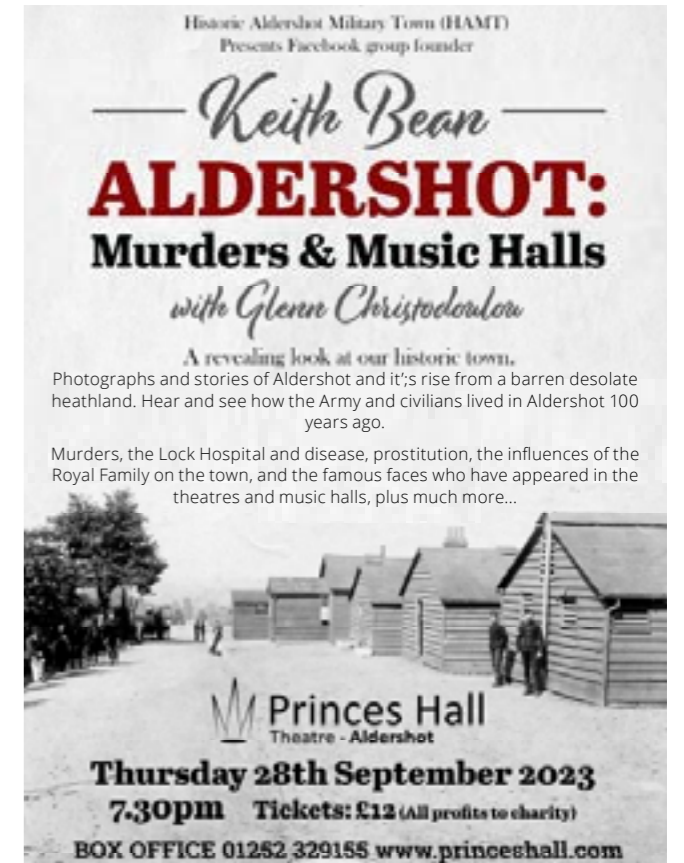
Thank you to Gigi from Paris School of Dance who contacted us to tell us about the tremendous success that the children and young people of Wellesley had in their dancing exams this summer:

"Congratulations to all of our students this year for their outstanding exam results in Ballet, Tap, musical theatre and acting!

Huge Congratulations also to Mollie who reached the finals of this year's Musical Theatre Awards in Blackpool aged only 10 yrs, after being nominated by her examiner in her Bronze solo musical theatre exam.

Classes are held at the Cambridge Primary School, Wellesley and we look forward to welcoming everyone back in the September term.

We have limited availability for new students age 4 to adult. Please contact www.parisschoolofdancing.co.uk or parisschoolofdancing@hotmail.co.uk"



We'd love to hear from you!

We want to make sure the news we share in this newsletter is interesting and relevant to all of our residents. Would you like us to share more information on a certain area of the development? Do you have a story or photo you'd like to share about Wellesley? Perhaps you'd like to say a thank you to one of your neighbours who has embraced the Wellesley spirit and been particularly neighbourly?

Whatever it is, we'd love to hear from you, email us info@wellesleyhampshire.co.uk

Town Centre Events

Rushmoor Heritage Festival

See Aldershot and Farnborough in a whole new light between 9th - 17th September.

People of all ages will enjoy a fortnight of heritage themed talks, walks, tours, open days and fun family activities, many of which are free. There is so much to discover!

- Take a cycle tour of Farnborough's aviation highlights
- Join the Pretty Sure Tours for a hilarious history of Hampshire
- Watch the Bombardiers in their wacky street theatre show
- Plus lots more!

Heritage sites across the Borough will be opening their doors as part of Heritage Open Days, where you can explore hidden places and captivating spaces. Don't miss guided tours, talks, walks and open days from Tice's Meadow, Farnborough Wind Tunnel, Farnborough Centrifuge, FAST Museum, RAPTC Museum and more.

Visit www.rushmoor.gov.uk/heritagefestival

This festival is part-funded by the UK government through the UK Shared Prosperity Fund.



Aldershot Classic Car Show & Autojumble

Aldershot is gearing up for a new classic car show on Saturday 16 September. Join us from 10am to 3pm, celebrating classic cars, bikes and other vehicles from around the globe.

Visitors can admire the many wheeled wonders on display alongside live music, autojumble stands, free family crafts, face painting, a bar, hot drinks and street food.

Entering your vehicle

There will be prizes for 'best in show' and other categories for those who enter a vehicle. There is no charge to display, but a donation to Phyllis Tuckwell Hospice is welcome on the day. To register your vehicle, or to book a space for an autojumble stand, please contact Herman Frost on 01252 320439.

The event is managed by Rushmoor Borough Council in partnership with Herman Frost. The event is part-funded by the UK government through the UK Shared Prosperity Fund.



Contact us

There are lots of ways you can keep up to date with the latest development news.



Email: info@wellesleyhampshire.co.uk
Website: www.wellesleyhampshire.co.uk
Phone: 01252 351966



Investing in homes since 1912
grainger plc