

Spring 2024



WELLESLEY TIMES



Project update

Welcome to the Wellesley Times

Firstly a big welcome to our newest residents. We're excited to have you join our vibrant community. As Wellesley continues to grow and evolve, we strive to create spaces that foster inclusivity, connectivity, and a sense of belonging for everyone. In line with this commitment, we're thrilled to introduce two exciting new additions that will be delivered this year and will exemplify our dedication to accessibility and community cohesion: a brand-new accessible play area and a thriving community garden.

Accessible Play Area: Fun for All Abilities

Our new accessible play area is designed with inclusivity in mind, ensuring that children of all abilities can enjoy the benefits of outdoor play. Equipped with sensory play elements, this playground provides a welcoming space where children can explore, learn and interact with one another regardless of their physical abilities.



Community Garden: Cultivating Connections Through Food

In addition to our accessible play area, we're thrilled that work will finally commence on our community garden this year—a place where residents can come together to cultivate, harvest and share fresh produce. More than just a source of nutritious food, our community garden will serve as a hub for social interaction.

If you would like to get involved please contact: info@wellesleyhampshire.co.uk

Stanhope West and School End

We're delighted to announce that Bellway have now completed on the next phase of land here at Wellesley. They will begin work, in Autumn, on building 260 new homes as well as delivering more green spaces for residents to enjoy.



Queens Avenue and Alisons Road Works

Thank you to all of our residents for their continued patience as work continues on the Queens Avenue and Alisons Road construction works. They are on track to complete in the summer of 2024.

Unfortunately in order to complete these works there will be some road closures during the Easter holidays. We will be writing to all of our residents to confirm the details during this time.

Wellesley Residents Trust

Making Changes to your home

We'd like to remind all residents that there is a restrictive covenant at Wellesley. This means you must seek permission from the Wellesley Residents Trust (WRT) before erecting any buildings within your property boundary or making any changes to the front of your property. This consent is in addition to any planning permission you may require from Rushmoor Borough Council. You can contact WRT for permission via email: info@wellesleyhampshire.co.uk

Handover of Areas

WRT has not yet accepted the handover of any areas. We know that here at Wellesley, residents take pride in their homes and their neighbourhood. The Wellesley Residents Trust continues to take proactive steps to ensure that the areas to be adopted by the WRT meet acceptable standards before being handed over. By collaborating with house builders, the Trust aims to prevent residents from facing costly repairs for substandard workmanship.

When land is sold to a house builder, they are responsible for the land (which includes the signage, roads, landscaping etc). If you notice that areas that are not up to standard then please contact the house builders directly.

If you are unsure who best to contact please email us at info@wellesleyhampshire.co.uk

Useful Contacts

Bellway Thames Valley - 0118 933 8020
Bellway South London - 01737 644911
Barratt Homes - 01483 508456
David Wilson Homes - 01483 508456
CALA Homes - 01784 225300
Weston Homes - 01279 873333
Taylor Wimpey - 01494 509090



Stanhope Gardens by Taylor Wimpey

Taylor Wimpey's Stanhope Gardens development is a thriving collection of approximately 430 homes which are situated in the heart of the Hampshire countryside. From couples looking to take their first step onto the property ladder to families looking to upsize, and anything in between, the one, two, three, four and five bedroom homes have something on offer for everyone.

The homes at Stanhope Gardens have been carefully designed to integrate seamlessly with the existing homes nearby. Many of the apartments feature balconies and outdoor areas. Each house has a private garden to relax in.

There are currently three different phases of Stanhope Gardens which have homes to move into - Wallace Place, Stirling Mews and Clayton Place. Each phase has been appropriately named to reflect the heritage of Aldershot and its strong, decades-long association with the British armed forces.

Special offers are available on selected plots, including mortgage payment contributions, stamp duty contributions and a variety of other incentives that can be tailored to you, to help get you moving.

To find out more about how Taylor Wimpey can make your dream home a reality, visit www.taylorwimpey.co.uk/new-homes/aldershot/stanhope-gardens.

Residents Committee

Wellesley Residents Committee

The Residents' Committee is made up of residents from the estate. We meet monthly to discuss arising issues and work with various other parties to support residents' interests.

Over the last couple of months, we ran a Christmas Bus event and supported the Welcome to Wellesley event in January. In February we'll be at the History of Aldershot event.

If you are interested in joining the committee, or wish to raise something with us, please get in touch via email: wellesleyresidentscommittee@gmail.com

Key focuses for the committee:

- 1) Education - we continue to engage with the consultation on expanding Alderwood Secondary School and have begun discussions with the Trust building the new primary school. We're hoping to support an information session for residents in the coming months.
- 2) Crime - we have engaged with the local police. Their advice remains to report all issues - receiving more reports will allow them to prioritise our issues more highly.
- 3) Health - unfortunately, the practice managers of both the Cambridge and Wellington practices refuse to engage with us, so if you continue to have issues with service or appointments, please contact your councillors or MP.
- 4) Management company issues - we are trying to work with management companies, particularly in regards to the content/tone of their communications and the lack of transparency around finances. If you have any particular issues with management companies, please let us know.
- 5) We are particularly interested in views from younger members on the development and aim to set up a youth forum or consultation event in the near future. If you are interested in being involved, please let us know.

Rushmoor Community in Bloom 2024

Spring is definitely on the way and the gardeners amongst us will be gearing up for the growing season! There are some fantastic gardens on Wellesley and last year I delivered some postcards about Rushmoor Community in Bloom to houses in Wellesley to encourage some of our impressive garden owners to get involved with the competition. It would be great to see even more Wellesley residents getting involved this year, so I'll be round with some postcards again soon!

Two new categories have been added this year and you will have the chance of winning various prizes including some generous vouchers for local garden centres and high street shops. There will be an awards event in September and a celebration of the achievements of all the hardworking gardeners - including those involved with community projects. Our own community garden on Wellesley should be opening this summer so we'll be able to get started on our entry for next year!

Categories this year include Best Front Garden, Most Unusual Planted Container, Best Wildlife Friendly Garden, Best Community Garden, Best Hanging Basket and Best Primary School Garden. Entries open on 26 April and close on 14 June. The judging period is between 8 - 22 July and it doesn't matter if you're away as long as the judges can access your garden in the categories where this applies. Go to www.rvs.org.uk/rushmoor-community-in-bloom for more information and to download an application form.

If you own or run a business locally and you're interested in sponsoring RCiB 2024 get in touch with me and I can give you some more details.

Jules Crossley
jules.crossley@rushmoor.gov.uk

Aldershot Town Centre



Local students brighten up town centre with artwork

Students from Alderwood Senior School have created artwork and photography to decorate the lamp posts and planters in Aldershot Town Centre.

The young people, aged 11-14, were challenged to research local flora and fauna in Rushmoor for the project. The students and their parents were invited to view the artwork once it was installed, joined by the Mayor of Rushmoor.

ALDERSHOT & FARNBOROUGH MARKETS

Aldershot craft fayres 2024

Plus, weekly markets on Thursdays

23 March
17 August
19 October
14 December

10am to 3pm
Union Street and Wellington Street, Aldershot

Come and browse the lovely handmade items our talented crafters have to offer!

CRAFT FAYRE

Easter Eggstravaganza

Families can enjoy cracking free family fun at our Easter Eggstravaganza events. Hop on down to Aldershot town centre on Saturday 6 April between 10am and 3pm, for magical mini-Easter egg hunts, Spring gardening, Easter hat making, face painting and an egg-citing visit to the Easter bunny's flower garden!

Pop-Up Allotment Easter Party - Join the Let's Grow Nannies in their Pop-Up Allotment for some Spring gardening and an Easter party! Journey inside the picket fencing and get stuck into the daily duties of feeding, bathing and caring for all their adorable baby fruits and vegetables. Enjoy a mini Easter Egg hunt and help style the babies for their allotment Easter Parade!

Easter Gardening Hat Workshop - Horticultural Haute Couture! Personalise a trilby-style gardening hat using all manner of colourful up-cycled fabrics, ribbon and materials! Customise your hat for Easter and enjoy wearing it throughout the Spring & Summer.

Visit the Easter bunny - Don your new hat and visit the Easter bunny in his Spring flower garden for a selfie.

Face painting - Our face painters will be creating colourful Easter designs (small cost).

www.rushmoor.gov.uk/easter

These events are funded and managed by Rushmoor Borough Council, part-funded by the UK Shared Prosperity Fund.

Easter Eggstravaganza

Hop on down for free family fun!

Aldershot Town Centre
Sat 6 Apr. 10am to 3pm. Free

RUSHMOOR

Over to you

A Word From 'Resident Rev' Dean Pusey

Ash

This piece could bring feelings to the surface around the theme of death.

'Remember that you are dust and to dust you shall return'

The marking of the Christian season of Lent begins on Ash Wednesday. These words are said at a service where ash is put on the foreheads of those present. In a culture that does not engage the reality of death well, it is a shock when we are near or confronted by it, but as the old prayer book says 'In the midst of life - there is death'.

At the time of writing this, I am reminded of this, in marking the 52nd Anniversary of the IRA bombing on Pennefather's Road. It was a day that started out as a normal one, but what occurred on 22/02/72 changed lives forever. We continue to mourn the loss, and the pain still lingers for those caught up in this atrocious act. I and others will mark this with a service of remembrance.

We are not sure when our time may come to an end, but it will and I hope it will be a good peaceful ending without pain or suffering - that is the best any of us can hope for. What we do before that is what counts, the legacy we leave lives on after us. Jesus Christ, lived and experienced the most awful death by capital punishment even though innocent. God in the person of Jesus Christ experienced that ending but there was something more that you can find out about when Easter comes in about 6 weeks. We as humans know loved ones who have departed and that is a part of us that aches and never goes. As a Christian, I do not believe that death has the last word, there is something more - and included in that is a hope-filled life that can be lived now. Every now and again it is needed for us to be reminded our mortality and confront fears and feelings around this, and do this honestly and as well as we can, in safe and supportive ways.

Preparing for endings can also be a beginning for hope and a different future for us and those whom we love.

Even with this - may we continue to live hope-filled lives in the now so that our endings will be well.

Peace
Dean



Over to you



Belle is growing her hair for charity

One of our younger residents, here at Wellesley, is growing her hair to eventually cut and donate to the Little Princess Trust.

Her mother got in touch with us to tell us more:

"When Belle found out about this charity she said instantly this is something she wanted to do to help other people. Belle has the most beautiful long hair so it is a huge deal for her as she's never had it cut short before.

She will be donating her hair to the Little Princess Trust but it costs the charity £550 to make the wigs so anything you can spare would make a big difference...thank you!"

Well done Belle, what an amazing thing to do! If you would like to sponsor Belle you can do so via the link below:

<http://tinyurl.com/rebecca-woodward>



Edible Wellesley: fresh, organic and free food.

These days, amid a cost of living crisis, free food is something to be valued. Here on Wellesley we have the opportunity to grow our own vegetables which are free for anyone to take.

If you walk on the path between Scarlett's Road and Hospital Road, you will see two raised planting beds (or planters). In the growing season they will be home for lots of edible plants - fresh, organic and free - for anyone to harvest. Last year we had beans, squashes, cabbages, cauliflower, tomatoes and fruit.

Of course the plants need looking after. So from spring onwards, people (of all ages) meet at the planters about once a fortnight to plant, weed, harvest - and also to chat and enjoy refreshments. Between those sessions, lots of watering is required - plants need soaking!

At the moment we have just those two planters in one location. In future, if enough people are committed to the gardening, there might be opportunities to set up planters in other areas of Wellesley. Wouldn't it be lovely if lots more families had this free food on their doorstep?

If you would like to get involved in this great initiative, please join the Edible Wellesley Facebook group or email: events@wellspringaldershot.uk

We look forward to meeting you.

Just for fun

Colour me in



Signs of Spring

As the nights become lighter from the winter solstice on 22 December, there are lots of signs to look out for as spring starts to slowly reappear. New signs of life emerge from the cold; bulbs begin to sprout, small mammals awaken from their winter hibernations and you will start to hear songbirds singing at dawn. Head over to the Wellesley Woodlands and see what you can spot!



Swallows and chiffchaffs migrate back to the UK in mid-March. Other birds, like house martins and willow warblers, soon follow. Listen for the distinctive sound of drumming from great spotted woodpeckers, a sure sign of spring.

Keep your eyes open for spring butterflies. Small Tortoiseshells and Peacocks start to appear as early as February, Brimstones, Red Admirals and Commas spread their wings in March.



Mini beasts start to show their faces as the days get slightly warmer. Look out for spiders, ladybirds, beetles and queen bumblebees who are looking for nectar.

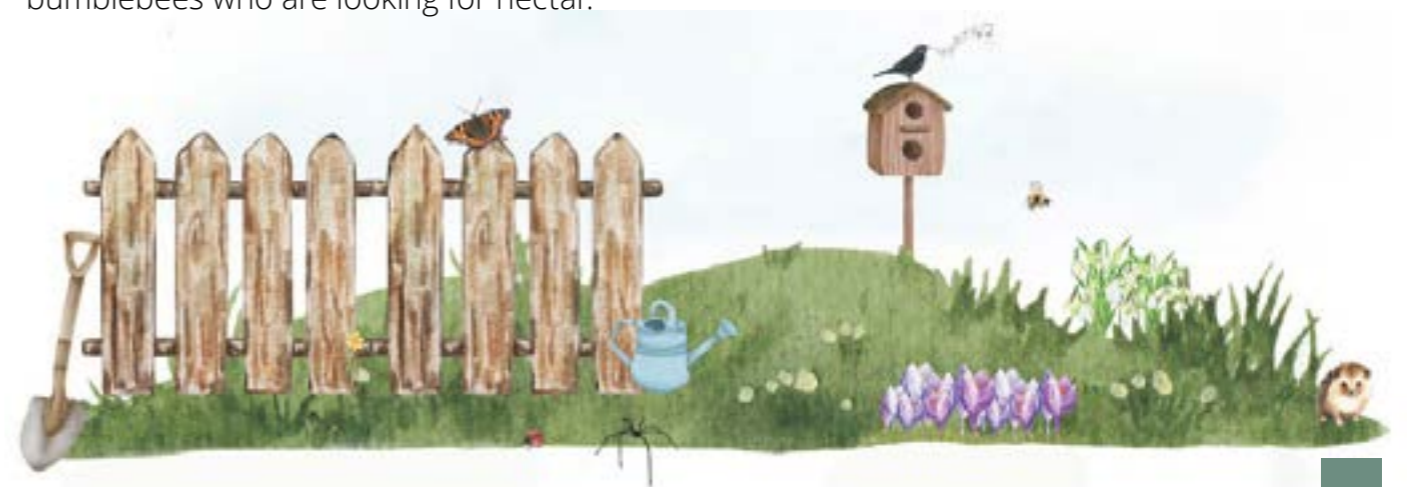
Bulbs start to poke through the soil, adding pockets of colour to our green spaces, sometimes as early as January, with snowdrops and crocuses appearing first. Look out for daffodil shoots appearing soon after, before they come into flower in early spring.



New buds and shoots start to appear on trees as the seasons start to change. Look out for ash and beech trees first as new life starts to grow.



Furry friends like bats, dormice and hedgehogs start to venture out for food from early March.



What's on?

West End Centre - Aldershot

Classes & Workshops:

Youth Theatre

Weekly Monday's during term time

8-12yrs 5pm-6.30pm

13-17yrs 7pm-9pm

Come and try it out for a week and see if it is a good fit!

Sewing Café

Monthly, Thursday's 10.30am-12.30pm, £5 per session

Family Art Workshops

Saturday 9th & 23rd March, 10.30am-12.30pm, £14 per session (price is for 1 child with 1 adult accompanying) Suitable for 3yrs+. All children must be accompanied by a responsible adult.

Comedy:

Hecklers Comedy Club

2nd Thursday of the Month - £14 / £5 18-25

FatPanda

Last Tuesday of the Month - £8 inc drink
Presenting the newest talent the circuit has to offer.

Upcoming Music:

Beaux Gris Gris & The Apocalypse

25th April - £13 ADV
California-based blues rock americana soul band created by Louisiana-born-and-raised musician Greta Valenti (Well Hung Heart) and UK British Blues Hall of Fame Inductee, Robin Davey.

Public Address

1st Saturday of the month - £5 adv
Multi-band new music unsigned night, discover your next vibe.

Cara Dillon

27th April - £19.50 adv

One of those rare talents you only come across a handful of times in your life. Her staggeringly beautiful voice has the ability to reach inside the soul of a song and imbue material with not only profound sweetness but also poignancy and depth.

Head to the website to find out more about what's on offer:

www.westendcentre.co.uk

The Princes Hall - Aldershot

Here at the Princes Hall theatre in Aldershot, we offer a wide variety of shows and events throughout the year. From comedians, to music, kids shows, dance shows and our incredibly popular pantomime each December.

Have you got a budding performer in the family? Or are you looking for school holiday entertainment? We run holiday workshops for children aged 6-11 years old, where they can spend a day learning theatrical skills in Play In A Day or strut their stuff at Dance In A Day. We also have weekly Youth Theatre classes that run on Saturdays termtime, run by our fantastic pantomime actors.

During the holidays we have family shows and this year that includes Peppa Pig this April, Fireman Sam in May, Horrible Histories and Dinosaur Adventure Live in July as well as Milkshake! Live in August.

Head to our website for our current availability and remember to book early to avoid disappointment.

We really do have something for everyone, and we look forward to welcoming you here soon.

Princes Hall Box Office 01252 329155

www.princeshall.com



Wellesley Woodlands



FREE Green Angels courses

Green Angels is the Land Trust's award winning FREE environmental training programme, which is delivered on a number of our sites across the country. It is an exciting training opportunity with an environmental focus, giving you the chance to learn new skills, change your future prospects and make a difference in your community. Anyone 18 years or over is welcome to participate. Booking is required.

Over the last 2 years, we have run courses in heritage building and green roof construction, bee keeping and learning more about our pollinators, pond creation for wildlife, hedge laying, willow weaving and plant folklore.

This year, these popular courses will run across a range of Land Trust sites in the local area including Wellesley Woodlands. Here are the up and coming courses

Fri 19th PM – Sat 20th April - Reptile and amphibian identification and surveying at Wellesley Woodlands, Aldershot

Tues 16th July – Wed 17th July Woodland & meadow wildlife Identification at Weyburn Meadows, Elstead

Wed 28th – Thurs 29th August An introduction to chalk grassland, butterfly surveying and Austrian scythe training, Runfold Ridge, near Tongham

To find out more please contact greenangels@thelandtrust.org.uk or

<https://www.facebook.com/GreenAngelsLT>

"Love Your Woodlands"

Along with our usual guided walks and nature related activities, we're now offering families the opportunity to get involved in caring for the woods. We'll be running short conservation tasks so you can help us manage the woods and learn more about how we help them to thrive. Look out for more "Love Your Woodlands" events over the next few months!

Over the winter, you may have spotted us at the Santa Bus, the festive wreath-making workshop, or our recent bird feeder workshop for the RSPB Big Garden Bird Watch. Now, as we transition into spring and summer, we'll be setting up the ever-popular Easter Trail, running bird & butterfly walks and planning the Wellesley Dog Show [STOP PRESS: date confirmed as Saturday 17th August]. Stay tuned to our social media channels for updates and details.

For those who can't wait to dive in, our volunteers lead a gentle stroll through a different part of the woodland every Friday morning. If solo exploration is more your style, you can explore the many miles of footpaths connecting meadows, heaths, water features and woodlands. Visit our website, grab a map and get out there!

Feel free to share your activity suggestions or drop us a line with any comments at wellesleywoodlands@tcv.org.uk Your enthusiasm and support makes Wellesley Woodland wonderful!

www.wellesleywoodlands.co.uk

Facebook: "wellesleywoodlands"

Instagram: "wellesleywoodlands"



Community Notice Board



all things Cookie.
www.allthingscookie.co.uk
@allthings.cookie

- Nationwide cookie delivery
- Dispatched every Thursday
- Free collection

Use code: **WELLESLEY10**
for **10% off** your first order

We love to hear from you!

We want to make sure the news we share in this newsletter is interesting and relevant to all of our residents. Would you like us to share more information on a certain area of the development? Do you have a story or photo you'd like to share about Wellesley?

Whatever it is, we'd love to hear from you, email us info@wellesleyhampshire.co.uk

Bag it and bin it, don't leave it!

We know that there are many responsible dog owners here at Wellesley, but, there are sadly a small number who are not picking up after their dogs. Please bag it and bin it. Leaving it creates a health and safety issue for our landscapers, meaning they can't carry out their work. It's also not nice for you or your neighbours. Please also avoid letting dogs urinate on artificial grass that is not your own as it can create bad odours when not cleaned.



PLAYERS WANTED!

Call or text...
Spike 07745 729510
Matt 01825 209636

U12S REDS

*** NEW PLAYERS WANTED *** ASH UNITED YOUTH FC

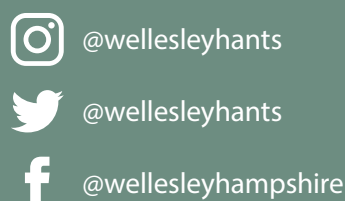
Our U12 red team are planning for next season and looking for new players as they move to 11-a-side. If you know someone who will be in Year 8 in September that would be interested in joining us, please get in touch for more info and arrange coming to training. Our team trains on a Tuesday evening and plays Saturday league football in the NEHYL.

Contact us

There are lots of ways you can keep up to date with the latest development news.



Email: info@wellesleyhampshire.co.uk
Website: www.wellesleyhampshire.co.uk
Phone: 01252 351966



Investing in homes since 1912
grainger plc